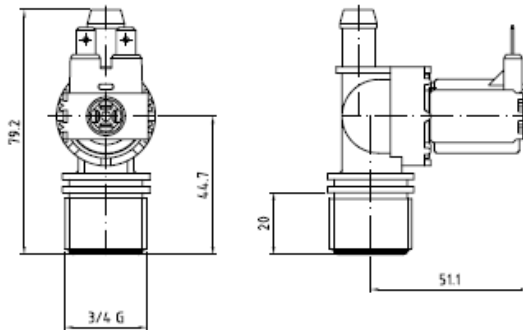


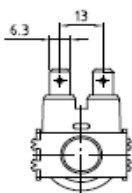
# ONE WAY INLET VALVE

ES 180/88

TIPO ES 180/88

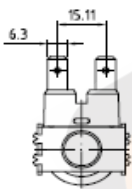


## Coils



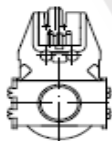
220/240V 50-60Hz 8VA  
 220/240V 50-60Hz 8VA RINF.  
 12V 50-60Hz  
 12V DC  
 24V 50-60Hz  
 24V DC

0.2-10 bar (0.02-1Mpa)  
 T60°C Tm25°C 100% ED  
 T60°C Tm90°C AB 3/5MIN



120V 60Hz

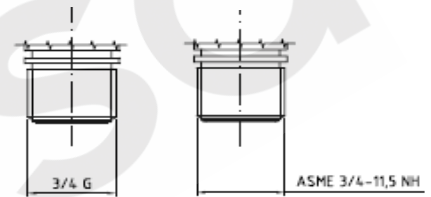
0.2-10 bar (0.02-1Mpa)  
 T60°C Tm25°C 100% ED  
 T60°C Tm90°C AB 3/5MIN



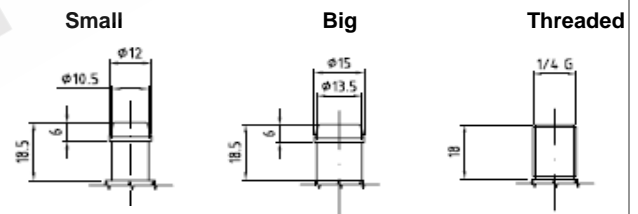
220/240V 50-60Hz 8VA  
 220/240V 50-60Hz 8VA RINF.  
 120V 60Hz  
 24V DC

0.2-10 bar (0.02-1Mpa)  
 T60°C Tm25°C 100% ED  
 T60°C Tm90°C AB 3/5MIN

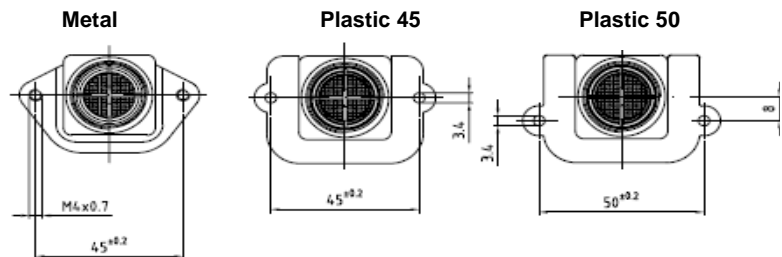
## Inlet thread



## Outlet



## Bracket



## Flow Regulators

### INLET REGULATORS

l/min	Colour	l/min	Colour
2,5	brilliant yellow	7	light green
3	red	8	black
3,5	light blue	10	white
3,8	pink	11	orange
4	dark brown	12	blue
4,5	blue	14	green
5	violet	16	light brown
5,5	yellow	20	brilliant red
6	gray		

### OUTLET REGULATORS

l/min	Colour	l/min	Colour
0,25	red	1.5	light brown
0,35	violet	2.5	yellow
0.5	orange	3	dark green
0,8	white	5	black
1	light blue	8	blue
1.2	dark brown		