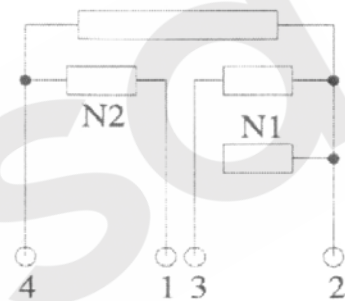
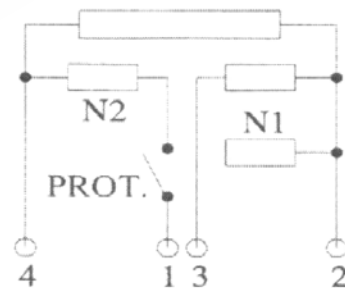


SCHALTSCHEMA
WIRIG DIAGRAM
ŠEMA VEZIVANJA

XXXXXX-2



XXXXXX-21



224030-21	400	2600	2 X 650	2 X 650	260	437	650	1300	1950	2600
222326-21	230	2600	2 X 650	2 X 650	260	437	650	1300	1950	2600
224020-2	400	2000	2 X 500	2 X 500	200	336	500	1000	1500	2000
222320-2	230	2000	2 X 500	2 X 500	200	336	500	1000	1500	2000
TYPE TYPE TIP	V~ VOLTAGE SPANNUNG NAPON	W WATLAGE LEISLUNG SNAGA	N1 RATED CONDUCTOR HEIZLEITERABSTUFUNG PARCIJALNA SNAGA	N2	1	2	3	4	5	6
					SWITCH POSITION SCHALTSTUFEN POLOŽAJ PREKIDAČA					



Slovenski inštitut za
kakovost in meroslovje
Slovenian Institute of
Quality and Metrology

ANNEX to C211-0063/12

page 1 of 1

Type reference and Ratings:

Type reference	Rated voltage	Rated wattage	Dimensions	Construction	Thermal protector	Positions of stepped controls
22 23 20-2	230 V	2000 W	220 x 220 mm	With ring	No	7 (0, 1, 2, 3, 4, 5, 6)
22 23 26-21	230 V	2600 W	220 x 220 mm	With ring	Yes	7 (0, 1, 2, 3, 4, 5, 6)
22 40 20-2	400 V	2000 W	220 x 220 mm	With ring	No	7 (0, 1, 2, 3, 4, 5, 6)
22 40 26-21	400 V	2600 W	220 x 220 mm	With ring	Yes	7 (0, 1, 2, 3, 4, 5, 6)
31 23 30-1	230 V	3000 W	300 x 300 mm	Without ring	No	4 (0, 1, 2, 3)
31 23 40-11	230 V	4000 W	300 x 300 mm	Without ring	Yes	4 (0, 1, 2, 3)
31 40 30-1	400 V	3000 W	300 x 300 mm	Without ring	No	4 (0, 1, 2, 3)
31 40 40-11	400 V	4000 W	300 x 300 mm	Without ring	Yes	4 (0, 1, 2, 3)
32 23 30-21	230 V	3000 W	300 x 300 mm	With ring	Yes	7 (0, 1, 2, 3, 4, 5, 6)
32 23 40-21	230 V	4000 W	300 x 300 mm	With ring	Yes	7 (0, 1, 2, 3, 4, 5, 6)
32 24 30-21	240 V	3000 W	300 x 300 mm	With ring	Yes	7 (0, 1, 2, 3, 4, 5, 6)
32 24 40-21	240 V	4000 W	300 x 300 mm	With ring	Yes	7 (0, 1, 2, 3, 4, 5, 6)
32 40 30-21	400 V	3000 W	300 x 300 mm	With ring	Yes	7 (0, 1, 2, 3, 4, 5, 6)
32 40 40-21	400 V	4000 W	300 x 300 mm	With ring	Yes	7 (0, 1, 2, 3, 4, 5, 6)
32 44 30-21	440 V	3000 W	300 x 300 mm	With ring	Yes	7 (0, 1, 2, 3, 4, 5, 6)
32 44 40-21	440 V	4000 W	300 x 300 mm	With ring	Yes	7 (0, 1, 2, 3, 4, 5, 6)
41 40 50-21	400 V	5000 W	400 x 400 mm	Without ring	Yes	7 (0, 1, 2, 3, 4, 5, 6)

Key of marking:

First number: Size of hot plate

2: 220x220 mm

3: 300x300 mm

4: 400x400 mm

Second number: Shape:

2 round edges with ring

1 sharp edges without ring

Third and fourth number: Rated voltage:

23: 230 V

24: 240 V

40: 400 V

44: 440 V

Fifth and sixth number: Rated input power

20: 2000 W

26: 2600 W

30: 3000 W

40: 4000 W

50: 5000 W

Seventh number: Number of switch positions

1: four positions

2: seven positions

Eight number: Thermal protector

/: without thermal protector

1: with thermal protector