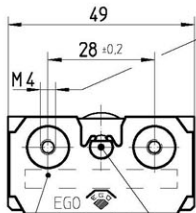
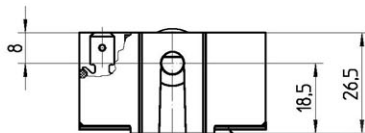


**Frontansicht**  
front view  
Pogled sprijeda



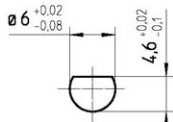
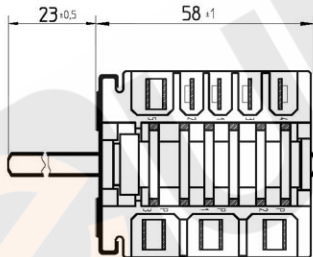
Einschraubtiefe max. 6mm  
screw-in-depth max. 6mm  
dubina uvrtnja max. 6mm



Zeichengenehmigung  
approvals  
Oznake i odorenja

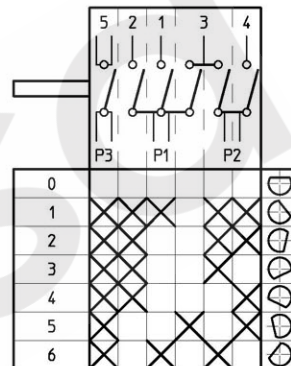
Achse in AUS-Stellung (0°)  
axle in OFF-position (0°)  
Osovina u položaju isključena (0°)

Deckel  
cover  
Poklopac



**Achsprofil**  
axle profile  
Profil osovine

**Schaltdiagramm**  
switching diagram  
Schema spoja



**Technische Angaben:**

- Flachstecker DIN 46244 A 6.3-0.8
- Abweichung der Achsstütze in AUS-Stellung max. +3°
- Genehmigte technische Daten siehe Zeichnungsnummer 46.00000.001

**technical data:**

- plug DIN 46244 A 6.3-0.8
- divergence of axle area in OFF-position max. +3°
- approved technical data see type drawing 46.00000.001

**Tehnički podaci:**

- Plosnati priključak DIN 46244 A 6.3-0.8
- Odstupanje ravnine osovine u položaju isključena max. +3°
- Odobreni tehnički podaci vidi crtež 46.00000.001

|                                    |                 |  |                               |  |                           |
|------------------------------------|-----------------|--|-------------------------------|--|---------------------------|
| . . . . .                          |                 | This document is exclusively committed to you for the agreed purpose. Any kind of duplication, utilization or communication of its content is prohibited, if not expressly conceded otherwise. Violators are committed to pay compensations. Any claims of existing or future property rights remain unaffected. | Blank No. . . . .             | EN Mat.No. . . . .   | Scale Unit<br><b>mm</b>   |
| . . . . .                          |                 |  | Material . . . . .            | Scale<br><b>1:1</b>  |                           |
| . . . . .                          |                 |  | Surface Texture ISO 1302      |  |                           |
| . . . . .                          |                 |  | General Tolerances ISO 2768-c |  |                           |
| 4                                  | CD0001          |  | 2010-12-15                    | Designation<br><b>EGO Geräteschalter</b><br><b>EGO multi function switch</b><br><b>EGO Okretna sklopka</b> |                           |
| 3                                  | F02914          | 2010-02-20   | CAD                           | Date   | Name                      |
| 2                                  | F01464          | 2005-11-10   | Create                        | 1996-11-05   | SOMMERR                   |
| Cha.                               | Information No. | Date   | Proc.                         | 2010-02-17   | MAURER                    |
| F.Rev.                             | 10961ER         | 1996-11-05   | Rel.                          | 2010-02-20   | BELZB                     |
| Drawing No.<br><b>46.27266.813</b> |                 |  | Sh.No.<br><b>901</b>          | Ver.<br><b>2 F</b>   | Stat. Sheets Doc. Ex.Doc. |
| Origin . . . . .                   |                 |  | Repl. for . . . . .           |  | Reference S3820           |
| . . . . .                          |                 |  | Repl. by . . . . .            |  |                           |