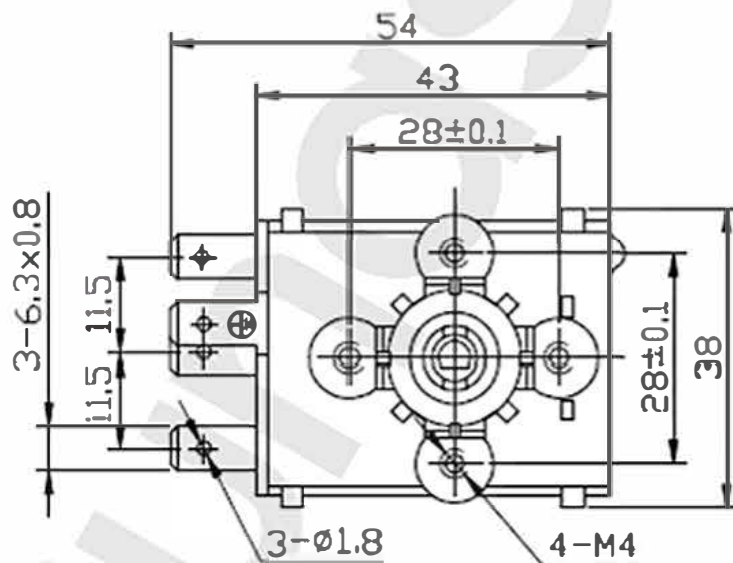
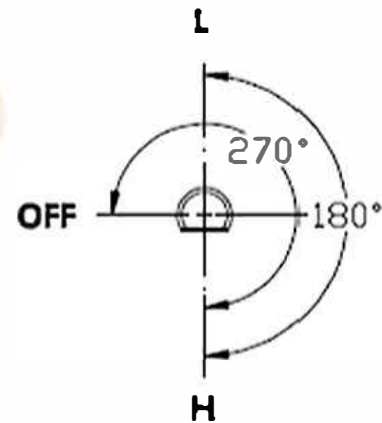
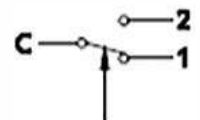


Angle of adjust shaft



pole point shape
S. P. D. T



Technical parameter:

- H point: $90 \pm 4^{\circ}$ L point: $30 \pm 6^{\circ}$ DIFF: $\leq 3^{\circ}$
- Rated voltage: 250VAC Rated current C-1 16A C-2 2.5A
- Touched resistance: $\leq 50m\Omega$
- Insulated resistance: $\geq 100M\Omega$
- Electric strength: AC 1250V/min
- Testing condition: (liquid) temperature changing speed rate $< 1^{\circ}/min$
- Main part highest heat-resistant: 120°
- Highest heat-resistant for heat feeling part: OFF $+30^{\circ}$
- Running distance of adjuster: 2-5NCM
- Longevity: 50,000 times