

Evaporator data

Model:
HEU201TC

Class:
Commercial Slim

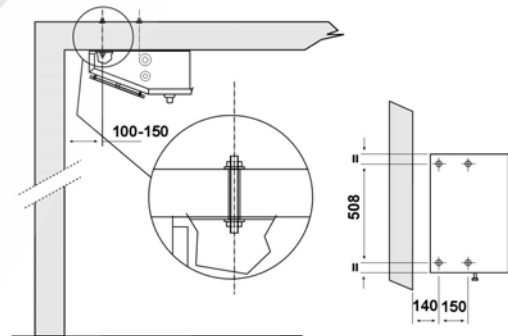
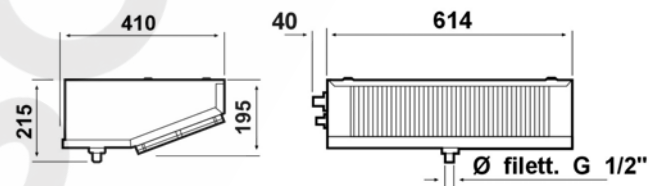
Construction characteristics:

- 3/8" seamless copper tube expanded into aluminum fins.
- Prepainted steel casing
- One phase fans motors 230 V, 50/60 Hz
- Electrical defrost trough stainless steel heaters
- 230 V vulcanized terminals



Technical Data

Characteristics	M.U.	Value
Uniform fin spacing	mm	5
Capacity 1 SC1*	kCal/h	869
	kW	1.01
Capacity 2 SC2*	kCal/h	602
	kW	0.7
Air flow	m ³ /h	600
Air throw	m	4
Surface	m ²	4.13
Fan motors	n x Ø mm	1 x 200
RPM		2450
Absorption 230V	A	0.32
Absorbed power	watt	75
Electric defrost	kW	0.45
Internal coil volume	dm ³	1.11
Net weight	Kg	12
Refrigerant inlet	Ø mm	12
Refrigerant outlet	Ø mm	12
Discharge		½" G



* SC1 Capacity TDi = 10 K, SC2 Capacity TDi = 8 K