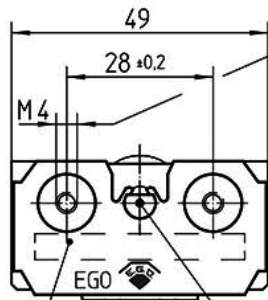
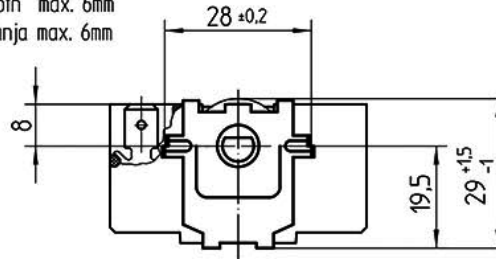


Frontansicht  
front view  
Pogled sprijeda

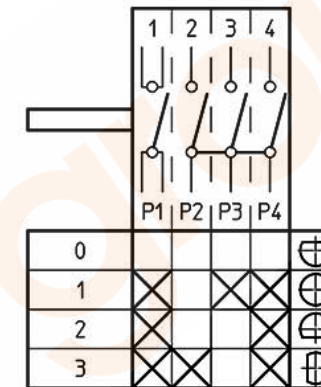


Einschraubtiefe max. 6mm  
screw-in-depth max. 6mm  
dubina uvrtnja max. 6mm

Rueckansicht  
rear view  
Pogled straga

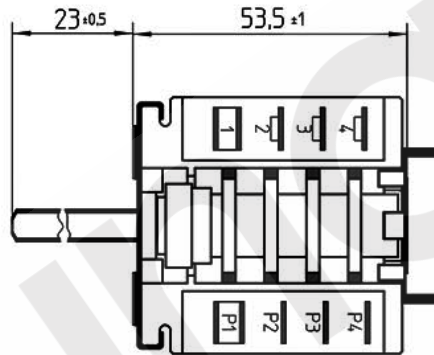


Schaltdiagramm  
switching diagram  
Schema spoja



Zeichengenehmigung  
approvals  
Oznake i odorenja

Achse in AUS-Stellung (0°)  
axle in OFF-position (0°)  
Osovina u položaju isključeno (0°)



Anmerkung:

Aufzukoppelndes Gerät:

- Achsprofil  $\varnothing 6 \begin{matrix} +0.02 \\ -0.08 \end{matrix} \times 4,6 \begin{matrix} +0.02 \\ -0.10 \end{matrix}$
- Montagehinweis siehe 42.00000.000

remark:

appliance to be connected:

- axle profile  $\varnothing 6 \begin{matrix} +0.02 \\ -0.08 \end{matrix} \times 4,6 \begin{matrix} +0.02 \\ -0.10 \end{matrix}$
- mounting detail see type drawing 42.00000.000

Napomena:

Priključeni uređaj:

- Profil osovine  $\varnothing 6 \begin{matrix} +0.02 \\ -0.08 \end{matrix} \times 4,6 \begin{matrix} +0.02 \\ -0.10 \end{matrix}$
- Upute za montazu vidi 42.00000.000

Technische Angaben:

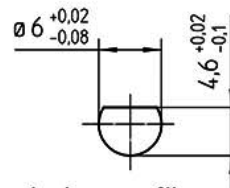
- Flachstecker DIN 46244 A 6,3-0,8
- Rasteranschluss: 8mm
- Abweichung der Achsfläche in AUS-Stellung max.  $\pm 3^\circ$
- Genehmigte technische Daten siehe Zeichnungsnummer 42.00000.001

technical data:

- plug DIN 46244 A 6,3-0,8
- connection: rast 8mm
- divergence of axle area in OFF-position max.  $\pm 3^\circ$
- approved technical data see type drawing 42.00000.001

Tehnicki podaci:

- Plosnati priključak DIN 46244 A 6,3-0,8
- Raster priključaka : 8 mm
- Odstupanje ravnine osovine u položaju isključeno max.  $\pm 3^\circ$
- Odobreni tehnicki podaci vidi crtez 42.00000.001



Achsprofil  
axle profile  
Profil osovine

This document is exclusively committed to you for the agreed purpose. Any kind of duplication, utilization or communication of its content is prohibited, if not expressly conceded otherwise. Violators are committed to pay compensations. Any claims of existing or future property rights remain unaffected.			Blank No. .	EN Mat.No. .	Scale Unit mm Scale 1:1				
3	CD0001	2010-12-15	Surface Texture ISO 1302		General Tolerances ISO 2768-c				
2	F03129	2010-09-24	CAD	Date		Designation			
1	F02915	2010-02-20	Create	2007-02-05	ERNSTC	EGO Programmschalter			
Cha.	Information No.	Date	Proc.	2010-09-13	ERNSTC	EGO multi function switch			
F.Rel.	F01913	2007-02-05	Rel.	2010-09-23	BELZB	EGO Okretna sklopka programska			
Origin 97.42044.973			Repl.för .	Repl.by .	Reference S0824				
E-G-O			Drawing No.	Sh.No.	Ver.	Stat.	Sheets	Doc.	Ex.Doc.
			42.04400.025	901	2	F	.	.	.