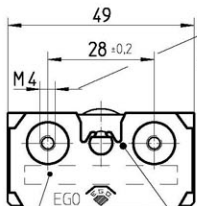


Frontansicht
front view
Pogled srijeda

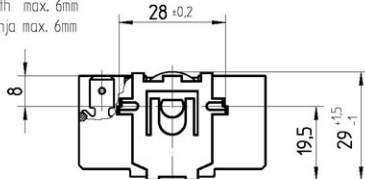


Einschraubtiefe max. 6mm
screw-in-depth max. 6mm
dubina uvrtnanja max. 6mm

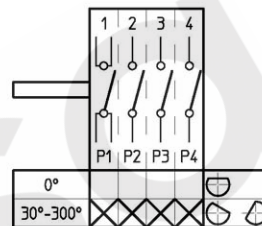
Zeichengenehmigung
approvals
Oznake i adorenja

Achse in AUS-Stellung (0°)
axle in OFF-position (0°)
Osovina u položaju isključeno (0°)

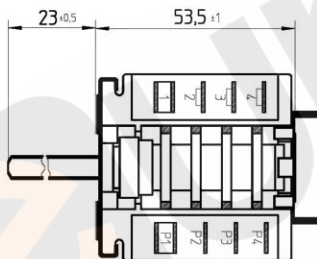
Rueckansicht
rear view
Pogled straga



Schaltdiagramm
switching diagram
Schema spoja



Anschlag zwischen 300° und 0°
stop between 300° and 0°
Granicnik između 300° i 0°



Anmerkung:

Aufzukoppelndes Gerät:

- Achsprofil $\varnothing 6 \begin{smallmatrix} +0.02 \\ -0.08 \end{smallmatrix} \times 4,6 \begin{smallmatrix} +0.02 \\ -0.10 \end{smallmatrix}$
- Anschlag bei $270^\circ \pm 2^\circ$
- Montagehinweis siehe 46.00000.000

remark:

appliance to be connected:

- axle profile $\varnothing 6 \begin{smallmatrix} +0.02 \\ -0.08 \end{smallmatrix} \times 4,6 \begin{smallmatrix} +0.02 \\ -0.10 \end{smallmatrix}$
- stop at $270^\circ \pm 2^\circ$
- mounting detail see type drawing 46.00000.000

Napomena:

Priključeni uređaj:

- Profil osovine $\varnothing 6 \begin{smallmatrix} +0.02 \\ -0.08 \end{smallmatrix} \times 4,6 \begin{smallmatrix} +0.02 \\ -0.10 \end{smallmatrix}$
- Granicnik kod $270^\circ \pm 2^\circ$
- Upute za montazu vidi 46.00000.000

Technische Angaben:

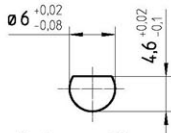
- Flachstecker DIN 46244 A 6,3-0,8
- Rasteranschluf: 8mm
- Abweichung der Achsfläche in AUS-Stellung max. $\pm 3^\circ$
- Genehmigte technische Daten siehe Zeichnungsnummer 42.00000.001

technical data:

- plug DIN 46244 A 6,3-0,8
- connection: rast 8mm
- divergence of axle area in OFF-position max. $\pm 3^\circ$
- approved technical data see type drawing 42.00000.001

Tehnički podaci:

- Plosnati priključak DIN 46244 A 6,3-0,8
- Raster priključaka : 8 mm
- Odslupanje ravnine osovine u položaju isključeno max. $\pm 3^\circ$
- Odobreni tehnički podaci vidi crtez 42.00000.001



Achsprofil
axle profile
Profil osovine

This document is exclusively committed to you for the agreed purpose. Any kind of duplication, utilization or communication of its content is prohibited, if not expressly conceded otherwise. Violators are committed to pay compensations. Any claims of existing or future property rights remain unaffected.		Blank No. EN Mat.No.	Scale Unit mm
Material		Scale 1:1	
Surface Texture ISO 1302		Ⓢ	
General Tolerances ISO 2768-c			
Designation EGO Programmschalter EGO multi function switch EGO Okretna sklopka programska			
Drawing No. 42.03400.009		Sh.No. 901	Ver. Stat. Sheets Doc. Ex.Doc. 2 F
Origin 97.42034.073		Reference 1233	