

CALIBRATION OF THE I/R ICE LEVEL CONTROL

At time of installation it's necessary to perform the calibration of the I/R Ice Level control.

- Switch OFF the machine at Master Green Push Button Switch
- Push and hold the PC Board Push Button
- Switch ON the machine at Master Green Push Button Switch
- Wait few seconds till all LEDs of the PC Board are ON
- Release the PC Board Push Button

The I/R Ice Level control is now calibrated

ÉTALONNAGE DE LA CELLULE INFRAROUGE

Lors de l'installation de la carte électronique, il est nécessaire de faire l'étalonnage de la cellule infrarouge

- Arrêter la machine à l'aide du bouton poussoir vert extérieur de la machine.
- Pousser le bouton de la carte et le maintenir enfoncé.
- Mettre en marche la machine à l'aide de bouton poussoir vert extérieur.
- Attendre 6-7 secondes jusqu'à les LEDs de la Carte sont allumés
- Relâcher le bouton poussoir de la carte

La cellule infrarouge est étalonnée.

CALIBRAZIONE DELLA SONDA OTTICA

All'installazione della scheda elettronica è necessario fare la calibrazione della sonda all'infrarosso

- Spegner la macchina all'interruttore a pulsante verde
- Premere il pulsante della scheda elettronica
- Mantenendo premuto il pulsante della scheda elettronica, mettere in marcia la macchina all'interruttore verde
- Attendere qualche secondo fino a che i tre LED della scheda si accendono
- Rilasciare il pulsante della scheda elettronica

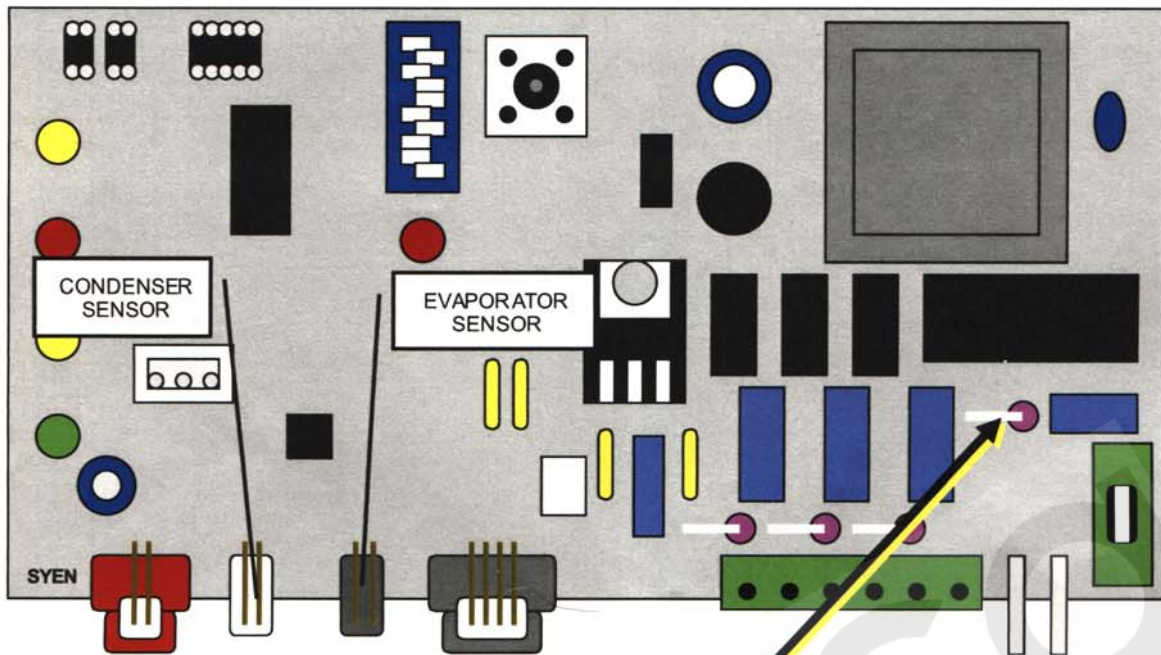
La sonda all'infrarosso è calibrata.

KALIBRIERUNG DER EISNIVEAU IR – LICHTSCHRANKE

Bei der Installation ist es notwendig eine Kalibrierung für die IR – Lichtschanke durchzuführen

- Schalten Sie die Maschine am grünen Hauptschalter aus
- Drücken und halten Sie den Taster auf der Platine
- Schalten Sie die Maschine bei gedrücktem Taster wieder ein
- Halten Sie den Taster solange gedrückt bis die LED auf der Platine blinkt

Die IR – Lichtschanke ist nun kalibriert

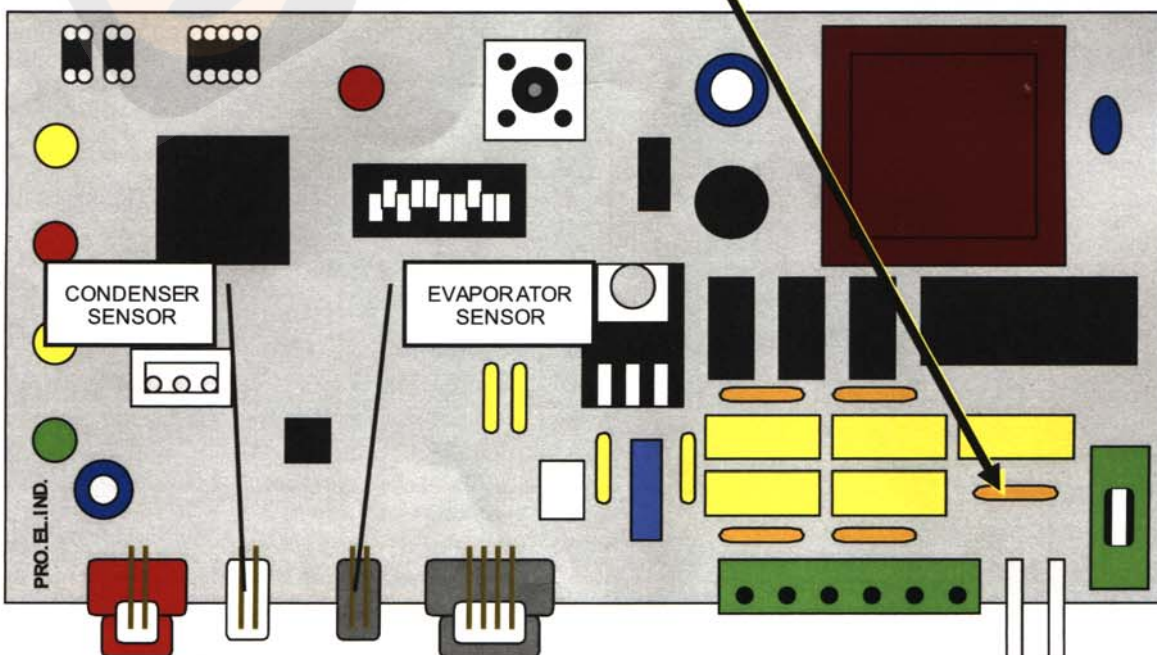


WHEN PC BOARD IS USED ON THE UNITS EQUIPPED WITH CONTACTOR ON COMPRESSOR POWER LINE, **THIS RESISTANCE MUST BE CUTTED**

QUANDO LA SCHEDA E' USATA NEI MODELLI DOTATI DI TELERUTTORE DI COMANDO DEL COMPRESSORE, **QUESTA RESISTENZA DEVE ESSERE TAGLIATA**

QUAND LA CARTE EST UTILISÉE SUR LES MACHINES AVEC LE CONTACTEUR SUR L'ALIMENTATION ELECTR. DU COMPRESSEUR, **CETTE RESISTENCE DOIT ETRE COUPÉE**

FALLS DIE PLATINE IN MODELLE MIT HAUPTRELAIS AM KOMPRESSOR VERWENDET WIRD, SOLL **DER WIDERSTAND GESCHNITTEN WERDEN.**



PC BOARD - DIP SWITCH FACTORY SETTINGS FOR R22 UNITS

	DIP SWITCH	FREEZING CYCLE				DEFROST CYCLE		DEFR. CYCLE ADD. TIME		15/30"	AIR WATER
		1	2	3	4	5	6	7	8	9	10
SMALL CUBES	ACS 125-175 A	OFF	OFF	ON	ON	ON	OFF	ON	ON	OFF	ON
	ACS 125-175 W	OFF	OFF	ON	ON	ON	OFF	ON	ON	OFF	OFF
	ACS 225 A	OFF	OFF	ON	ON	ON	OFF	OFF	ON	ON	ON
	ACS 225 W	OFF	OFF	ON	ON	ON	OFF	OFF	ON	ON	OFF
	MCS 15 A	ON	OFF	ON	ON	ON	OFF	ON	ON	ON	ON
	MCS 15 W	ON	OFF	ON	ON	ON	OFF	ON	ON	ON	OFF
	MCS 45 A	OFF	ON	ON	ON	ON	OFF	OFF	ON	ON	ON
	MCS 45 W	OFF	ON	ON	ON	ON	OFF	OFF	ON	ON	OFF
MEDIUM CUBES	ACM 85 A	ON	ON	OFF	ON	ON	OFF	ON	ON	OFF	ON
	ACM 85 W	ON	ON	OFF	ON	ON	OFF	ON	ON	OFF	OFF
	ACM 125 A	OFF	ON	OFF	ON	ON	OFF	ON	ON	OFF	ON
	ACM 125 W	OFF	ON	OFF	ON	ON	OFF	ON	ON	OFF	OFF
	ACM 175 A - B 90 A	OFF	OFF	ON	ON	ON	OFF	ON	ON	OFF	ON
	ACM 175 W - B 90 W	OFF	OFF	ON	ON	ON	OFF	ON	ON	OFF	OFF
	ACM 225 A	ON	ON	OFF	ON	ON	OFF	OFF	ON	ON	ON
	ACM 225 W	ON	ON	OFF	ON	ON	OFF	OFF	ON	ON	OFF
	MCM 15-45 A	ON	ON	OFF	ON	ON	OFF	ON	ON	ON	ON
	MCM 15-45 W	ON	ON	OFF	ON	ON	OFF	ON	ON	ON	OFF
	MCM 1210 A	OFF	ON	OFF	ON	ON	OFF	OFF	ON	ON	ON
	MCM 1210 W	OFF	ON	OFF	ON	ON	OFF	OFF	ON	ON	OFF
LARGE CUBES	ACL 125 A	OFF	OFF	OFF	ON	OFF	OFF	OFF	ON	OFF	ON
	ACL 125 W	OFF	OFF	OFF	ON	OFF	OFF	OFF	ON	OFF	OFF
	ACL 175 A - BUL 90 A	OFF	ON	OFF	ON	OFF	OFF	ON	ON	OFF	ON
	ACL 175 W - BUL 90 W	OFF	ON	OFF	ON	OFF	OFF	ON	ON	OFF	OFF
	ACL 225 A	ON	OFF	OFF	ON	ON	OFF	OFF	ON	ON	ON
	ACL 225 W	ON	OFF	OFF	ON	ON	OFF	OFF	ON	ON	OFF
	MCL 15-45 A	ON	OFF	OFF	ON	ON	OFF	ON	ON	ON	ON
	MCL 15-45 W	ON	OFF	OFF	ON	ON	OFF	ON	ON	ON	OFF
	MCL 1210 A	ON	ON	ON	OFF	ON	OFF	OFF	ON	ON	ON
MCL 1210 W	ON	ON	ON	OFF	ON	OFF	OFF	ON	ON	OFF	

START UP DELAY
JUMP IN - 0 MIN.
JUMP OUT - 60 MIN.

*RETARD AU DEMARRAGE
CONTACT FERME' - 0 MIN
CONTACT OUVERTE - 60 MIN*

RITARDO ALLA PARTENZA
CONTATTO CHIUSO - 0 MIN
CONTATTO APERTO - 60 MIN.

AC-MC/EC MODELS
JUMP IN - AC-MC SERIES
JUMP OUT - EC SERIES

*MODELES AC-MC/EC
CONTACT FERME' - SERIES AC-MC
CONTACT OUVERTE - SERIES EC*

MODELLI AC-MC/EC
CONTATTO CHIUSO - SERIE AC-MC
CONTATTO APERTO - SERIE EC

TEST

WATER SYSTEM CLEANING REMIND
JUMP IN - 6 MONTHS
JUMP OUT - 12 MONTHS

*RAPPEL NETTOYAGE SYSTEME
HYDRAULIQUE
CONTACT FERME' - 6 MOIS
CONTACT OUVERTE - 12 MOIS*

RICHIAMO PULIZIA SISTEMA IDRICO
CONTATTO CHIUSO - 6 MESI
CONTATTO APERTO - 12 MESI

DIP SWITCH FACTORY SETTINGS - R134A AND R404A UNITS

	DIP SWITCH	FREEZING CYCLE				DEFROST CYCLE		DEFR. CYCLE ADDED TIME		15/30 SEC.	AIR WATER
		1	2	3	4	5	6	7	8	9	10
SMALL CUBES	ACS-ECS 125 A	OFF	OFF	ON	ON	ON	OFF	ON	ON	OFF	ON
	ACS-ECS 126-176 A	ON	ON	OFF	ON	OFF	ON	ON	ON	OFF	ON
	ACS-ECS 126-176 W	ON	ON	OFF	ON	OFF	ON	ON	ON	OFF	OFF
	ACS-ECS 225-226 A	ON	OFF	ON	ON	OFF	ON	ON	ON	ON	ON
	ACS-ECS 225-226 W	ON	OFF	ON	ON	OFF	ON	ON	ON	ON	OFF
	MCS 8 A	ON	ON	ON	ON	OFF	ON	ON	ON	ON	ON
	MCS 8 W	ON	ON	ON	ON	OFF	ON	ON	ON	ON	OFF
	MCS 16 SHORT A	ON	OFF	ON	ON	OFF	ON	ON	ON	ON	ON
	MCS 16 SHORT W	ON	OFF	ON	ON	OFF	ON	ON	ON	ON	OFF
	MCS 15-16-45-46 A	ON	OFF	ON	ON	ON	OFF	ON	ON	ON	ON
	MCS 15-16-45-46 W	ON	OFF	ON	ON	ON	OFF	ON	ON	ON	OFF
	MEDIUM CUBES	ACM-ECM 45-55-85-105-106-125-175-176 A	ON	ON	OFF	ON	ON	OFF	ON	ON	OFF
ACM-ECM 45-55-85-105-106-125-175-176 W		ON	ON	OFF	ON	ON	OFF	ON	ON	OFF	OFF
ACM-ECM 126 A		ON	ON	OFF	ON	ON	OFF	ON	ON	OFF	ON
ACM-ECM 126-176 W		ON	ON	OFF	ON	OFF	ON	ON	ON	OFF	OFF
ACM-ECM 176 A		ON	ON	OFF	ON	OFF	ON	ON	ON	OFF	ON
ACM-ECM 206-225-226 A		ON	ON	OFF	ON	OFF	ON	ON	ON	ON	ON
ACM-ECM 206-225-226 W		ON	ON	OFF	ON	OFF	ON	ON	ON	ON	OFF
MCM 8 A		ON	ON	OFF	ON	OFF	ON	ON	ON	ON	ON
MCM 8 W		OFF	OFF	ON	ON	ON	OFF	ON	ON	ON	OFF
MCM 16 SHORT A		OFF	OFF	ON	ON	OFF	ON	ON	ON	ON	ON
MCM 16 SHORT W		OFF	OFF	ON	ON	OFF	ON	ON	ON	ON	OFF
MCM 15-16 A		OFF	ON	OFF	ON	ON	OFF	ON	ON	ON	ON
MCM 15-16 W		OFF	ON	OFF	ON	ON	OFF	ON	ON	ON	OFF
MCM 45-46 A		ON	ON	OFF	ON	ON	OFF	ON	ON	ON	ON
MCM 45-46 W		OFF	ON	OFF	ON	ON	OFF	ON	ON	ON	OFF
LARGE CUBES	ACL-ECL 55 A	ON	ON	ON	OFF	ON	ON	ON	ON	OFF	ON
	ACL-ECL 105-106-176 A	OFF	OFF	OFF	ON	OFF	ON	ON	ON	OFF	ON
	ACL-ECL 105-106-176 W	OFF	OFF	OFF	ON	OFF	ON	ON	ON	OFF	OFF
	ACL-ECL 126 A	ON	ON	ON	OFF	OFF	ON	OFF	ON	OFF	ON
	ACL-ECL 126 W	ON	ON	ON	OFF	OFF	ON	OFF	ON	OFF	OFF
	ACL-ECL 125-176 A	OFF	OFF	OFF	ON	OFF	OFF	ON	ON	OFF	ON
	ACL-ECL 206-225-226 A	OFF	OFF	OFF	ON	OFF	ON	ON	ON	ON	ON
	ACL-ECL 206-225-226 W	OFF	OFF	OFF	ON	OFF	ON	ON	ON	ON	OFF
	MCL 8-16 SHORT A	OFF	OFF	OFF	ON	OFF	ON	ON	ON	ON	ON
	MCL 8-16 SHORT W	OFF	OFF	OFF	ON	OFF	ON	ON	ON	ON	OFF
	MCL 15-16-45-46 A	ON	ON	ON	OFF	ON	OFF	ON	ON	ON	ON
	MCL 15-16-45-46 W	ON	ON	ON	OFF	ON	OFF	ON	ON	ON	OFF
XL	MCXL 45-46 W	OFF	ON	OFF	OFF	OFF	ON	ON	OFF	ON	OFF